

Babila Soft - Stools

Manufacturer: Pedrali, Italy



Product Code	Description	Powder Coated	Chrome	Antique Brass	Polished Aluminum	Satinized
--------------	-------------	------------------	--------	------------------	----------------------	-----------

Upholstered Seat Shell Bar And Counter Stools With Metal And Wood Base Options



2747/2

Counter Stool - Sled base

COM: 100 cm - 1.1 yds

Upholstered with Category C Fabrics	\$1,286	\$1,639	\$1,313	-	-
Upholstered with Category D Fabrics	\$1,410	\$1,763	\$1,436	-	-
Upholstered with Category E Fabrics	\$1,680	\$2,033	\$1,706	-	-
Upholstered with Category G Fabrics	\$1,598	\$1,950	\$1,624	-	-
Upholstered with Category H Fabrics	\$1,328	\$1,680	\$1,354	-	-
COM*	\$1,178	\$1,530	\$1,204	-	-



2748/2

Upholstered bar stool, sled base

COM: 100 cm - 1.1 yds

Upholstered with Category C Fabrics	\$1,294	\$1,639	\$1,320	-	-
Upholstered with Category D Fabrics	\$1,418	\$1,763	\$1,444	-	-

Babila Soft - Stools

Manufacturer: Pedrali, Italy



2748/2

Upholstered bar stool, sled base

COM: 100 cm - 1.1 yds

Product Code	Description	Powder Coated	Chrome	Antique Brass	Polished Aluminum	Satinized
	Upholstered with Category E Fabrics	\$1,688	\$2,033	\$1,714	-	-
	Upholstered with Category G Fabrics	\$1,605	\$1,950	\$1,631	-	-
	Upholstered with Category H Fabrics	\$1,335	\$1,680	\$1,361	-	-
	COM*	\$1,185	\$1,530	\$1,211	-	-



2757/2

Counter Stool - Four leg wood base, metal foot rest in four finishes

COM: 100 cm - 1.1 yds

	Upholstered with Category C Fabrics	\$1,650	\$1,920	-	\$1,838	\$1,838
	Upholstered with Category D Fabrics	\$1,774	\$2,044	-	\$1,961	\$1,961
	Upholstered with Category E Fabrics	\$2,044	\$2,314	-	\$2,231	\$2,231
	Upholstered with Category G Fabrics	\$1,961	\$2,231	-	\$2,149	\$2,149
	Upholstered with Category H Fabrics	\$1,691	\$1,961	-	\$1,879	\$1,879
	COM*	\$1,541	\$1,811	-	\$1,729	\$1,729



2758/2

Upholstered Bar Stool - Four leg wood base, metal foot rest in four finishes

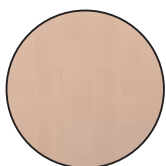
COM: 100 cm - 1.1 yds

	Upholstered with Category C Fabrics	\$1,650	\$1,920	-	\$1,838	\$1,838
	Upholstered with Category D Fabrics	\$1,774	\$2,044	-	\$1,961	\$1,961
	Upholstered with Category E Fabrics	\$2,044	\$2,314	-	\$2,231	\$2,231
	Upholstered with Category G Fabrics	\$1,691	\$2,231	-	\$2,149	\$2,149
	Upholstered with Category H Fabrics	\$1,691	\$1,961	-	\$1,879	\$1,879
	COM*	\$1,541	\$1,811	-	\$1,729	\$1,729

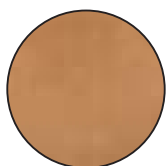
Babila Soft - Stools Finishes

Manufacturer: Pedrali, Italy

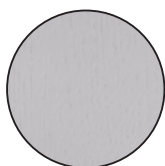
Wood Finishes



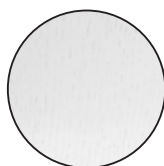
FR



N1



GC

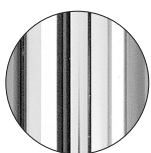


BI



AN

Metal Finishes



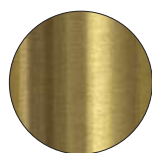
CR

Chromed steel



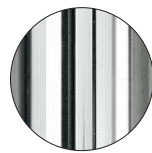
ST

Satinized steel



OA

Antique brass steel



LU

Polished aluminium

Powder coated



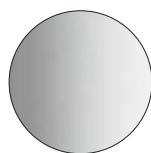
B100

White,
textured-matt finish



B1200

White,
textured-matt finish



B1300

White,
smooth-matt finish



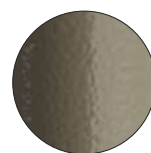
SA100

Sand,
textured-matt finish



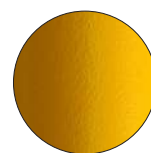
SA200

Sand,
textured-matt finish



SA300

Sand,
hammered-glossy finish



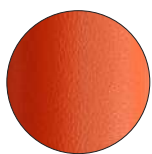
GI100

Yellow,
textured-matt finish



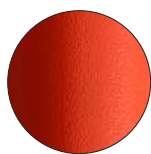
AR200

Orange,
textured-matt finish



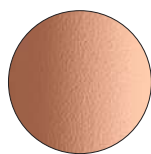
AR500

Orange,
textured-matt finish



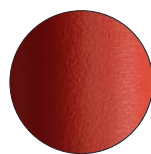
AR400

Orange,
textured-matt finish



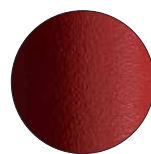
RA100

Pink,
textured-matt finish



RO400

Red,
textured-matt finish



RO200

Red,
textured-matt finish



RO300

Red,
textured-matt finish



TE200

Terracotta,
textured-matt finish



TE

Terracotta,
textured-matt finish



MI100

Honey,
textured-matt finish



RU

Rust,
textured-matt finish



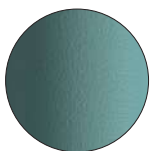
MG

Brown,
textured-matt finish

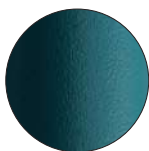
Babila Soft - Stools Finishes

Manufacturer: Pedrali, Italy

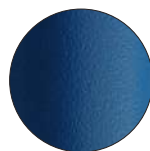
Powder coated



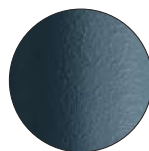
AZ100
Light blue,
textured-matt finish



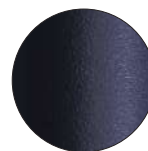
BL500
Blue,
textured-matt finish



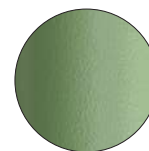
BL300
Blue,
textured-matt finish



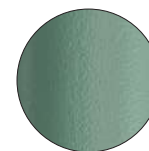
BL600
Blue,
textured-matt finish



BL400
Blue,
textured-matt finish



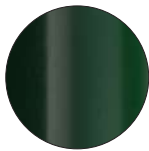
VE100
Sage green,
textured-matt finish



VE600
Green,
textured-matt finish



VE300
Forest green,
textured-matt finish



6005
Green,
smooth-glossy finish



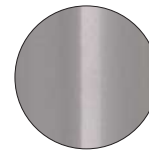
VE400
Green,
textured-matt finish



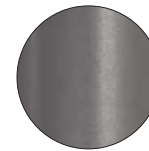
BE100
Beige,
textured-matt finish



BE200
Beige,
textured-matt finish



AL
Aluminium,
smooth-glossy finish



9007
Aluminium,
smooth-matt finish



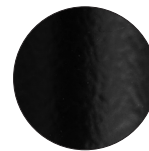
AG
Aluminium,
textured-matt finish



GA
Anthracite grey,
textured-matt finish



GN
Natural grey,
textured-matt finish



_NERO
Black,
hammered-matt finish



Tusch Seating International Inc.
251 Bartley Dr. Unit #4
Toronto, ON M4A 2N7 Canada
www.tuschseating.com

T 416.368.6100
F 416.368.4477
T 888.368.6101
info@tuschseating.com

(*) COM Orders are subject to following charges per manufacturer: \$18 per yard (any fabric) - Minimum: \$200.
Minimum order 10 pcs each fabric colour. Feasibility to be approved